

## Government Insights Public Employee Directory

Published by SmartSource Media, LLC, Government Insights Public Employee Directory offers direct coverage to key City & County decision makers and influencers across the US. One of the largest directories of its kind, this up-to-date file reaches local and county government officials which include Town Managers, Selectmen, Public Works Directors and more. All of which play a major role in procuring products and services to help improve local infrastructure for cities and towns across America. Call your representative today for counts in your area.

### SEGMENTS

187,548	Total Universe / Universe Rate	\$95.00/M
33,288	County Gov't Officials	+ \$95.00/M
147,284	City Gov't Officials	+ \$95.00/M

### MEDIA TYPE

Business 

### SOURCE

Compiled lists, Multi-Sourced

### GEOGRAPHY

USA

### MAINTENANCE

Market Entry	11/09/2009
New to Manager	01/29/2010
Counts Through	07/10/2014

### DATA CARD MAINTENANCE

New To System	02/24/2009
Last Update	07/10/2014
Next Update	12/31/2014
Update Frequency	QUARTERLY

### DESCRIPTION

This one of a kind file is telephone verified throughout the year ensuring accurate deliverability and connectivity. Additional titles and selections are available.

#### OFFICIALS

ANIMAL CONTROL OFFICER	762
ASSESSOR CITY	3,433
ATTORNEY CITY	16,139
AUDITOR CITY	2,446
AVIATION DIRECTOR	406
BUDGET DIRECTOR	345
BUILDING OFFICIAL	4,307
CLERK CITY	13,584
COMMUNITY DEVELOPMENT DIR	903
COURT CLERK	1,956
DEVELOPMENT SERVICES DIR	60
DIRECTOR OF AGING	297
ECONOMIC DEVELOPMENT DIR	792
ELECTIONS DIR	576
EMERGENCY SERVICES DIR	3,460
ENGINEER CITY	3,062
FINANCE DIRECTOR	4,209
FIRST SELECTMAN	5,179
GIS COORDINATOR	83
GRANTS COORD	38
HEALTH OFFICIAL	1,326
HOUSING DIRECTOR	540
HUMAN RESOURCES DIRECTOR	2,260
INFORMATION TECHNOLOGY DIR	935
LAND COMMISSIONER	54
MAGISTRATE	101

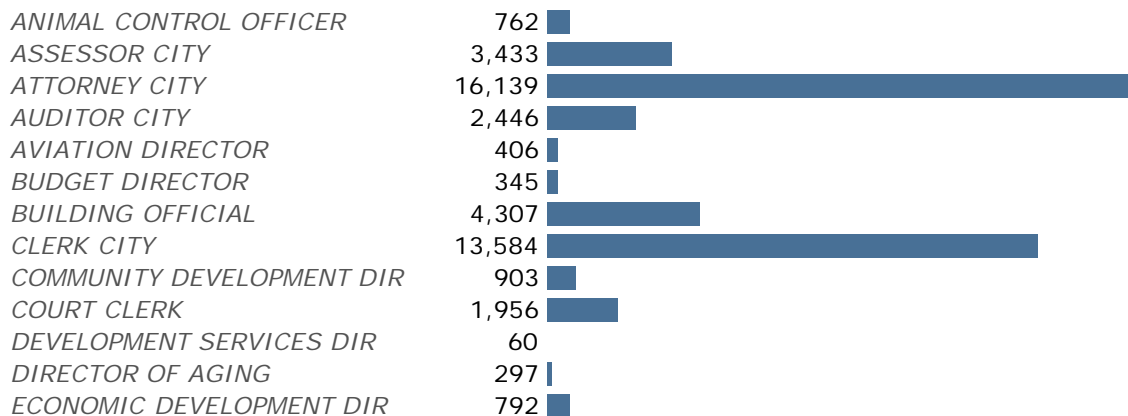
#### OFFICIALS

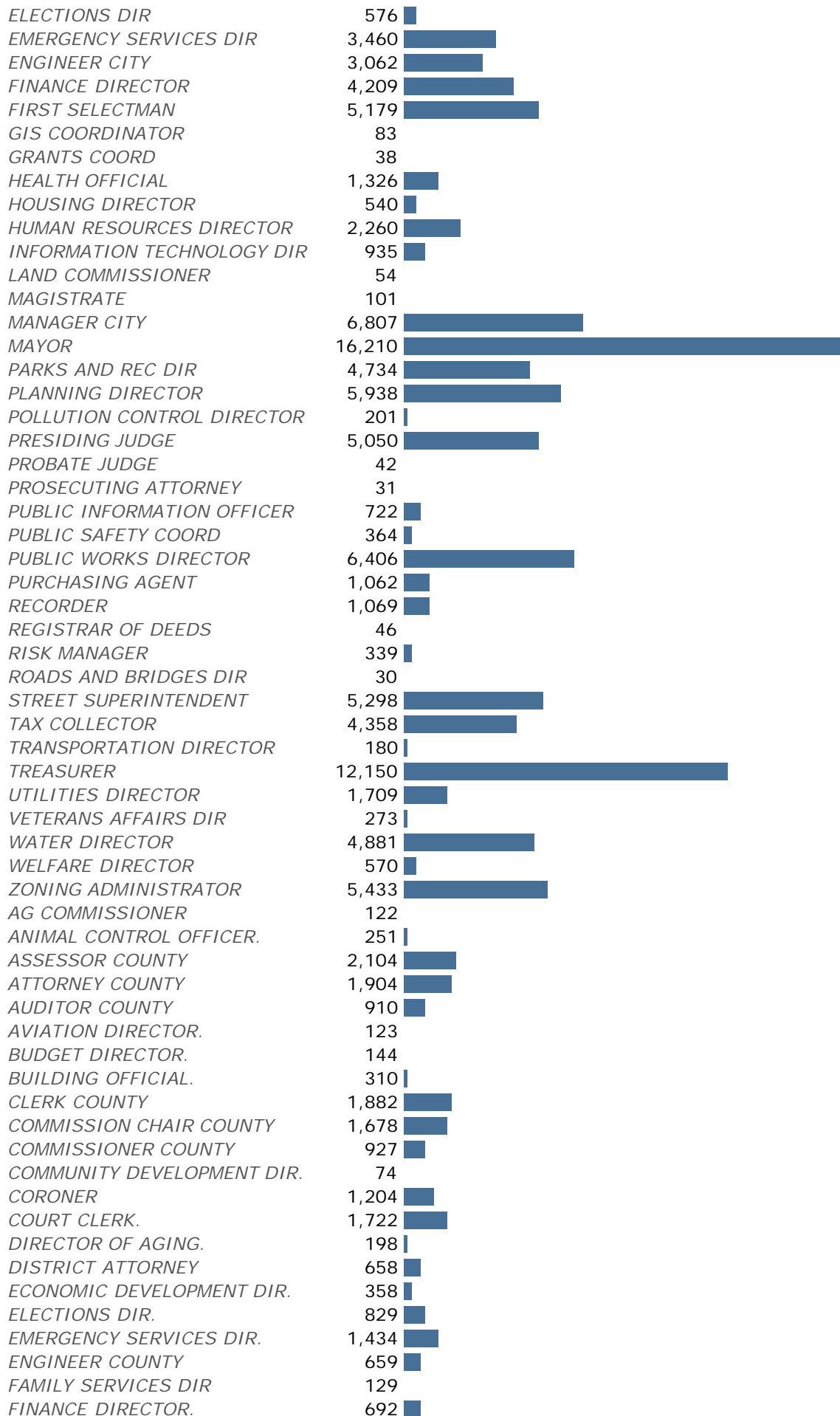
AG COMMISSIONER	122
ANIMAL CONTROL OFFICER	251
ASSESSOR COUNTY	2,104
ATTORNEY COUNTY	1,904
AUDITOR COUNTY	910
AVIATION DIRECTOR	123
BUDGET DIRECTOR	144
BUILDING OFFICIAL	310
CLERK COUNTY	1,882
COMMISSION CHAIR COUNTY	1,678
COMMISSIONER COUNTY	927
COMMUNITY DEVELOPMENT DIR	74
CORONER	1,204
COURT CLERK	1,722
DIRECTOR OF AGING	198
DISTRICT ATTORNEY	658
ECONOMIC DEVELOPMENT DIR	358
ELECTIONS DIR	829
EMERGENCY SERVICES DIR	1,434
ENGINEER COUNTY	659
FAMILY SERVICES DIR	129
FINANCE DIRECTOR	692
GIS COORDINATOR	188
GRANTS COORD	43
HEALTH OFFICIAL	2,487
HOUSING DIRECTOR	93

MANAGER CITY	6,807	HUMAN RESOURCES DIRECTOR	665
MAYOR	16,210	INDUSTRIAL AUTHORITY DIRECTOR	66
PARKS AND REC DIR	4,734	INFORMATION TECHNOLOGY DIR	613
PLANNING DIRECTOR	5,938	LAND COMMISSIONER	76
POLLUTION CONTROL DIRECTOR	201	MAGISTRATE	270
PRESIDING JUDGE	5,050	MANAGER COUNTY	1,259
PROBATE JUDGE	42	MAYOR	105
PROSECUTING ATTORNEY	31	PARKS AND REC DIR	465
PUBLIC INFORMATION OFFICER	722	PLANNING DIRECTOR	599
PUBLIC SAFETY COORD	364	POLLUTION CONTROL DIRECTOR	360
PUBLIC WORKS DIRECTOR	6,406	PRESIDING JUDGE	906
PURCHASING AGENT	1,062	PROBATE JUDGE	322
RECORDER	1,069	PROBATION DIR	316
REGISTRAR OF DEEDS	46	PROSECUTING ATTORNEY	855
RISK MANAGER	339	PUBLIC DEFENDER	272
ROADS AND BRIDGES DIR	30	PUBLIC INFORMATION OFFICER	143
STREET SUPERINTENDENT	5,298	PUBLIC SAFETY COORD	191
TAX COLLECTOR	4,358	PUBLIC WORKS DIRECTOR	416
		PURCHASING AGENT	410
TRANSPORTATION DIRECTOR	180	RECORDER	942
TREASURER	12,150	REGISTRAR OF DEEDS	776
UTILITIES DIRECTOR	1,709	RISK MANAGER	128
VETERANS AFFAIRS DIR	273	ROADS AND BRIDGES DIR	857
WATER DIRECTOR	4,881	STREET SUPERINTENDENT	81
WELFARE DIRECTOR	570	SURVEYOR	388
ZONING ADMINISTRATOR	5,433	TAX COLLECTOR	878
		TRANSPORTATION DIRECTOR	127
		TREASURER	2,277
		UTILITIES DIRECTOR	63
		VETERANS AFFAIRS DIR	824
		WATER DIRECTOR	32
		WEED SUPT	253
		WELFARE DIRECTOR	491
		ZONING ADMINISTRATOR	463

## PROFILE

### OFFICIALS

<i>ANIMAL CONTROL OFFICER</i>	762	
<i>ASSESSOR CITY</i>	3,433	
<i>ATTORNEY CITY</i>	16,139	
<i>AUDITOR CITY</i>	2,446	
<i>AVIATION DIRECTOR</i>	406	
<i>BUDGET DIRECTOR</i>	345	
<i>BUILDING OFFICIAL</i>	4,307	
<i>CLERK CITY</i>	13,584	
<i>COMMUNITY DEVELOPMENT DIR</i>	903	
<i>COURT CLERK</i>	1,956	
<i>DEVELOPMENT SERVICES DIR</i>	60	
<i>DIRECTOR OF AGING</i>	297	
<i>ECONOMIC DEVELOPMENT DIR</i>	792	



GIS COORDINATOR.	188
GRANTS COORD.	43
HEALTH OFFICIAL.	2,487
HOUSING DIRECTOR.	93
HUMAN RESOURCES DIRECTOR.	665
INDUSTRIAL AUTHORITY DIRECTOR	66
INFORMATION TECHNOLOGY DIR.	613
LAND COMMISSIONER.	76
MAGISTRATE.	270
MANAGER COUNTY	1,259
MAYOR.	105
PARKS AND REC DIR.	465
PLANNING DIRECTOR.	599
POLLUTION CONTROL DIRECTOR.	360
PRESIDING JUDGE.	906
PROBATE JUDGE.	322
PROBATION DIR	316
PROSECUTING ATTORNEY.	855
PUBLIC DEFENDER	272
PUBLIC INFORMATION OFFICER.	143
PUBLIC SAFETY COORD.	191
PUBLIC WORKS DIRECTOR.	416
PURCHASING AGENT.	410
RECORDER.	942
REGISTRAR OF DEEDS.	776
RISK MANAGER.	128
ROADS AND BRIDGES DIR.	857
STREET SUPERINTENDENT.	81
SURVEYOR	388
TAX COLLECTOR.	878
TRANSPORTATION DIRECTOR.	127
TREASURER.	2,277
UTILITIES DIRECTOR.	63
VETERANS AFFAIRS DIR.	824
WATER DIRECTOR.	32
WEED SUPT	253
WELFARE DIRECTOR.	491
ZONING ADMINISTRATOR.	463

#### SELECTS

COUNTY	\$15.00/M
FAX NUMBERS	\$65.00/M
JOB FUNCTION/TITLE	\$20.00/M
PHONE NUMBER	\$35.00/M
SCF	\$15.00/M
STATE	\$15.00/M
ZIP	\$15.00/M
OFFICIALS	

#### GENDER

Male	50%
Female	50%

#### AVERAGE INCOME

Value **not available**

#### MINIMUM ORDER

Minimum Quantity **5,000**  
Minimum Price **\$475.00**

#### NET NAME ARRANGEMENTS

Net Name is not allowed

#### EXCHANGES

Exchange is not allowed

#### REUSE

Reuse is not allowed

#### CANCELLATION

Charges **\$150.00/F**

#### KEY CODING

Key Coding is available  
Charges **\$5.00/M**

#### ADDRESSING

EMAIL DELIVERY **\$55.00/F**  
CARRIER ROUTE PRESORT

**SPECIAL INSTRUCTIONS**

List rental is for one time use unless specified otherwise. Cancellations are not accepted after file delivery. Merge/purge deductions are not permitted. Prepayment required.